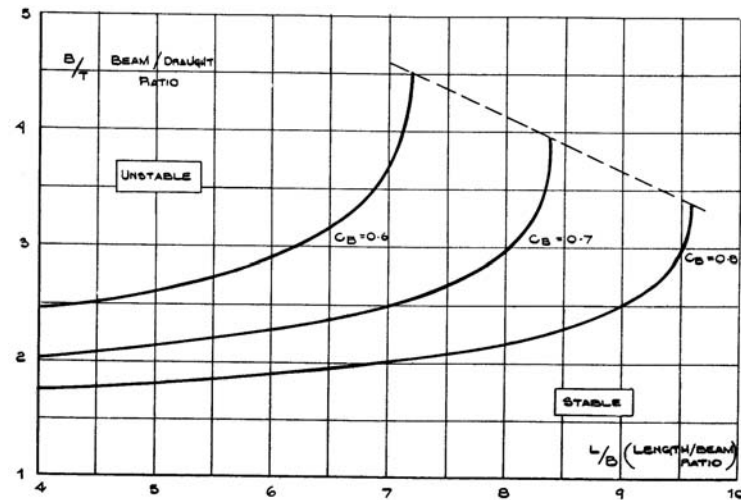


Hull parameters and their effect on dynamic stability

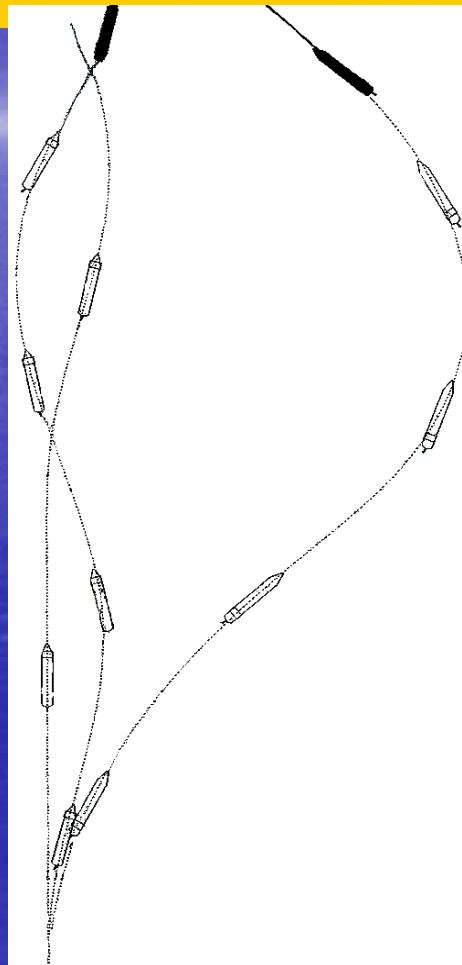
LENGTH	BEAM	DRAUGHT	C_b	DYNAMIC STABILITY
INCREASE	SAME	SAME	SAME	INCREASES
SAME	INCREASE	SAME	SAME	DECREASES
SAME	SAME	INCREASE	SAME	INCREASES
SAME	SAME	SAME	INCREASE	DECREASES



Course keeping stability "Deep water"

Car-carrier
Full ahead
 $L/V = 19.2$
Max over-shoot 15°
Half ahead
 $L/V = 32$
Max over-shoot 20°
Actual 8°

In shallow water:
Both vessel more
Directional stable



Tanker
Full ahead
 $L/V = 31.2$
Max overshoot 20°
Actual $38^\circ / 60^\circ$