

Lyssna och följ instruktionerna

Genomskinligt papper - mall





Dimensions (L x W x D) [m]
202.4 x 31.0 x 9.2

Draft 9,2 m

Lpp 190,6 m

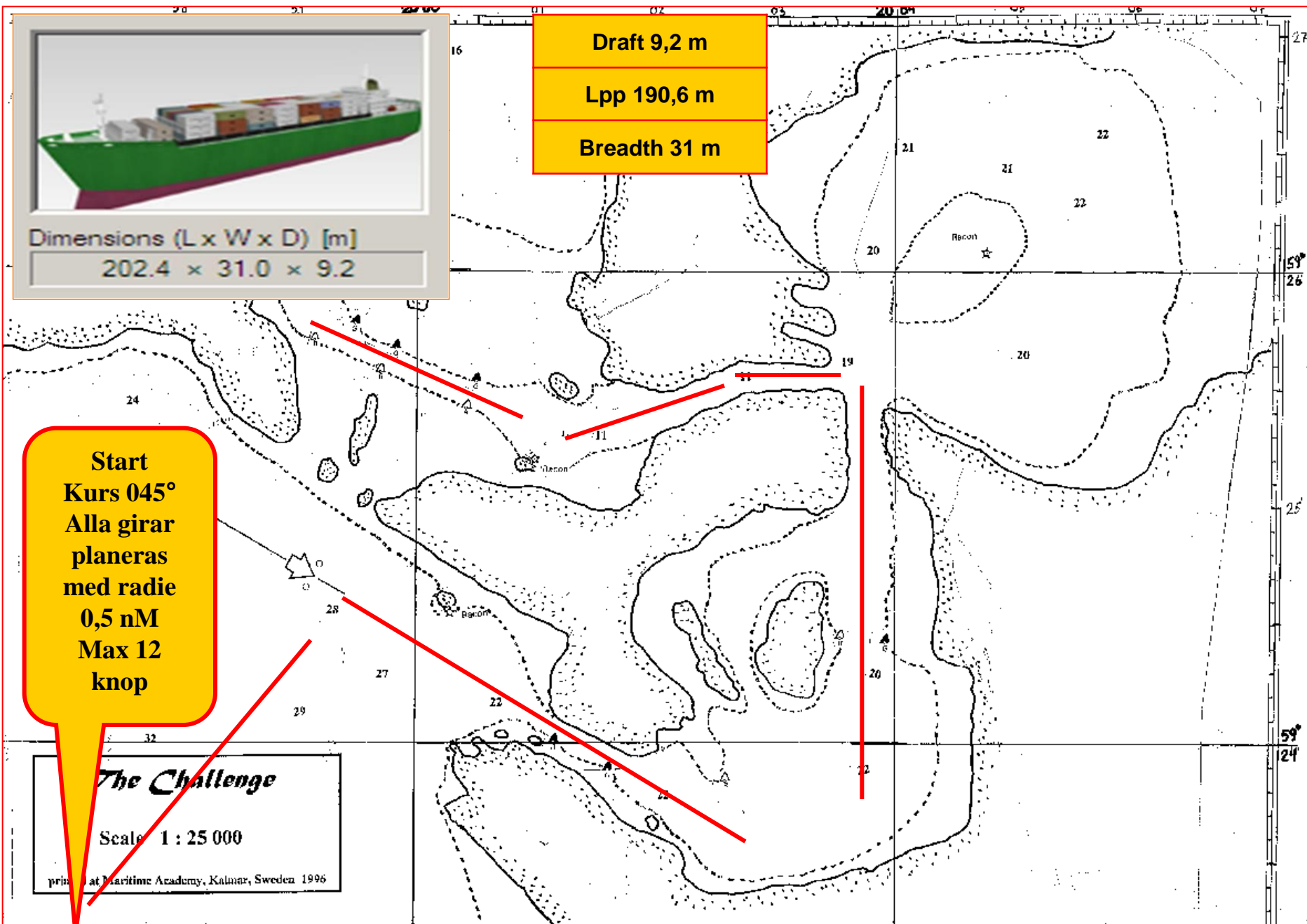
Breadth 31 m

Start
Kurs 045°
Alla girar
planeras
med radie
0,5 nM
Max 12
knop

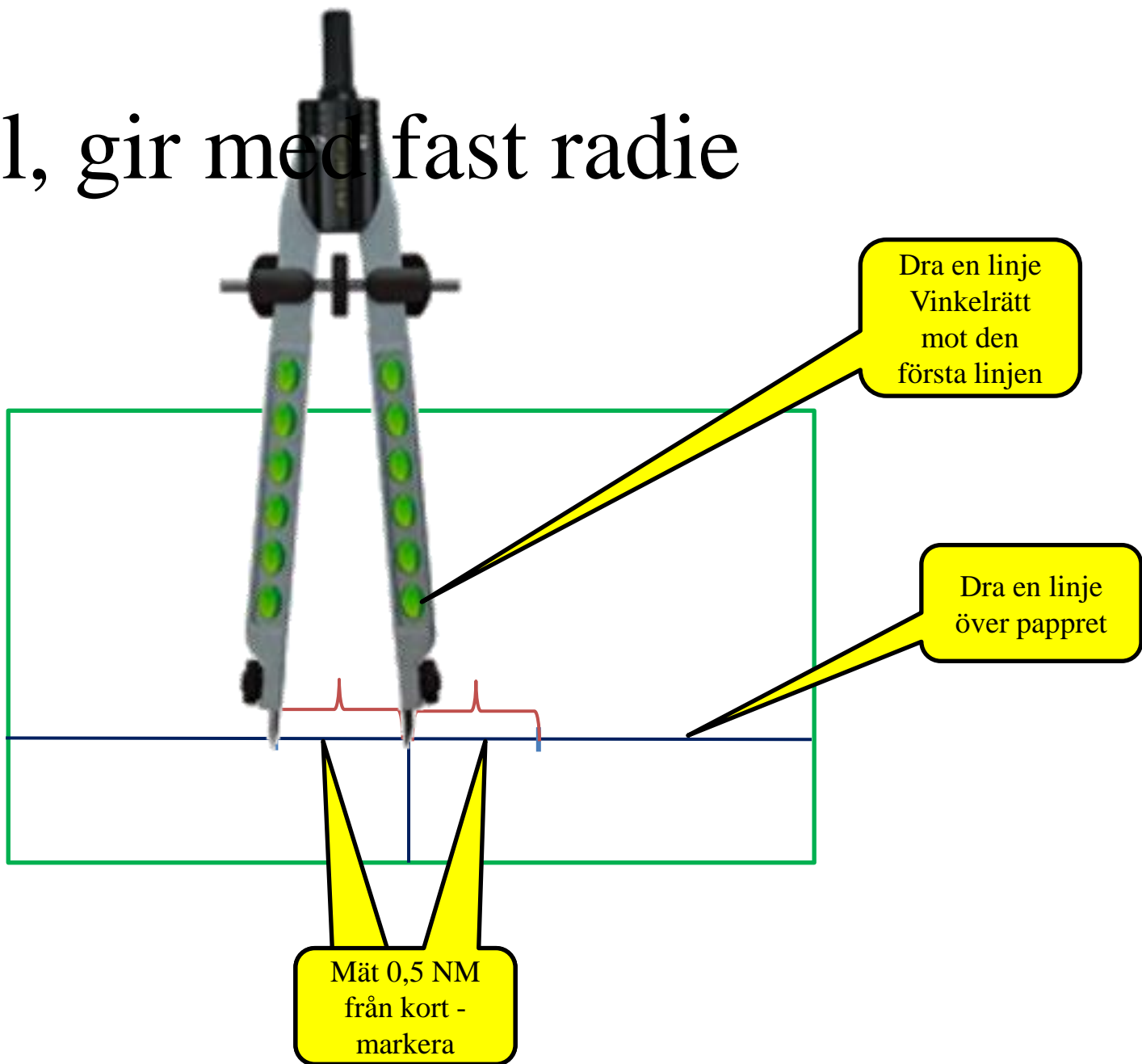
The Challenge

Scale 1 : 25 000

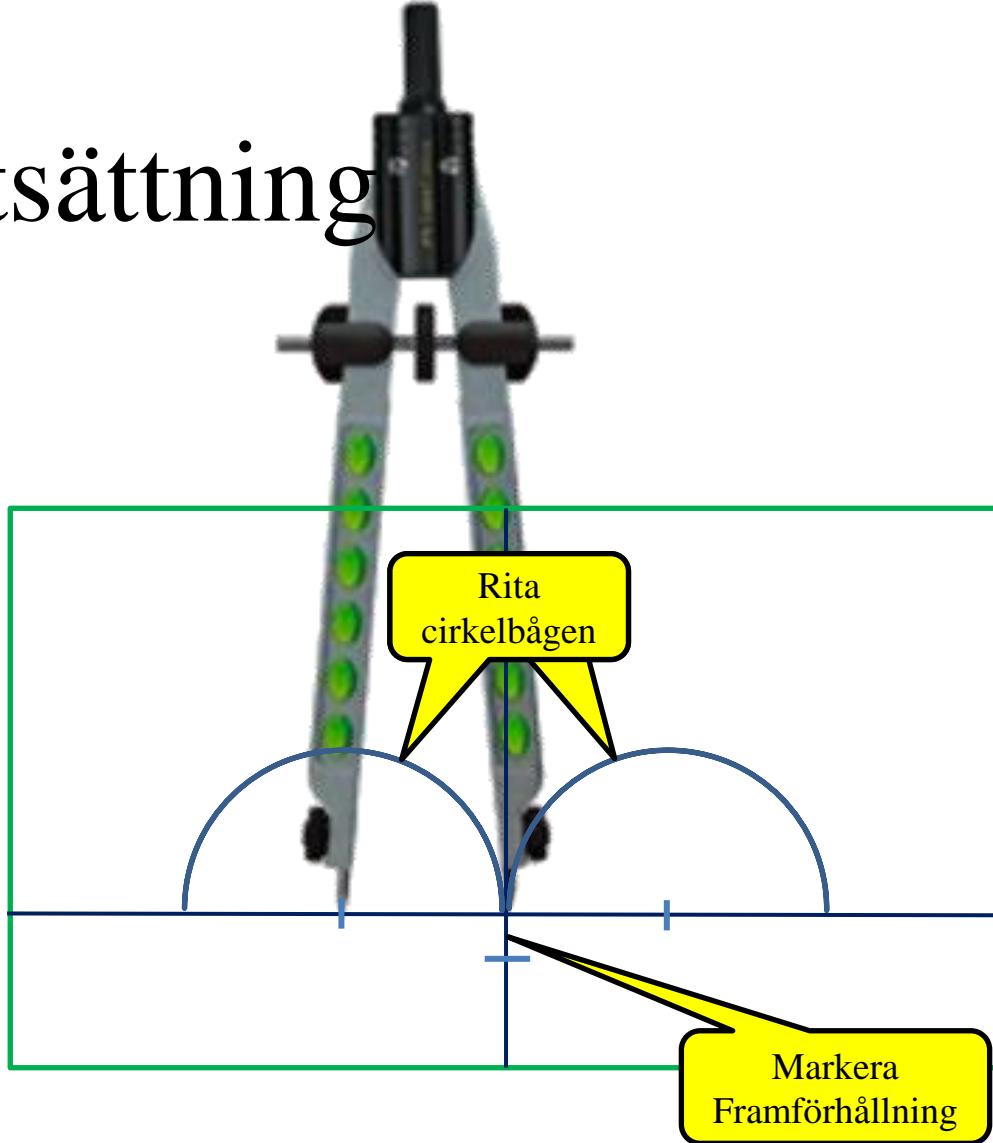
printed at Maritime Academy, Kalmar, Sweden 1996



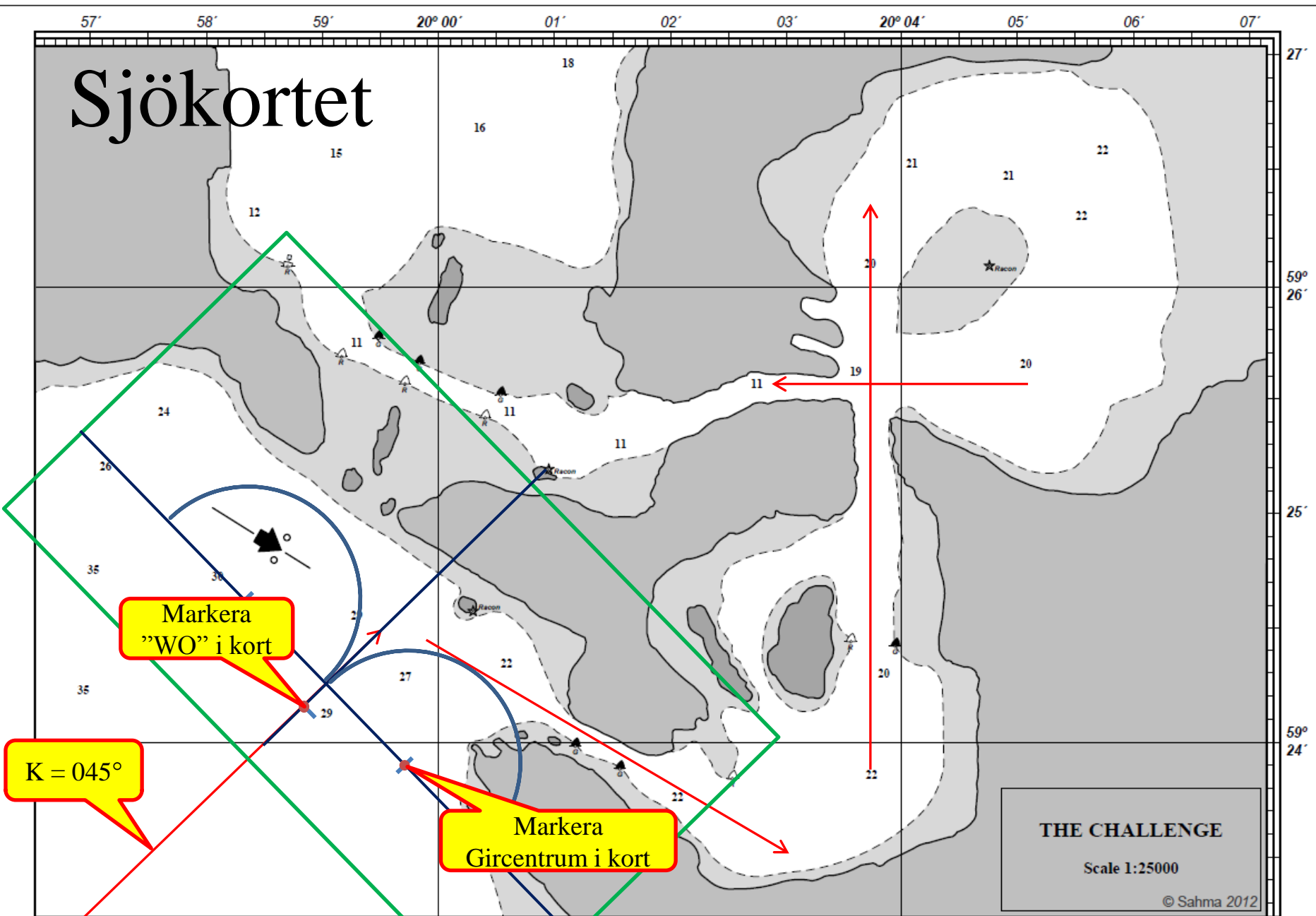
Mall, gir med fast radie



Fortsättning



Sjökortet

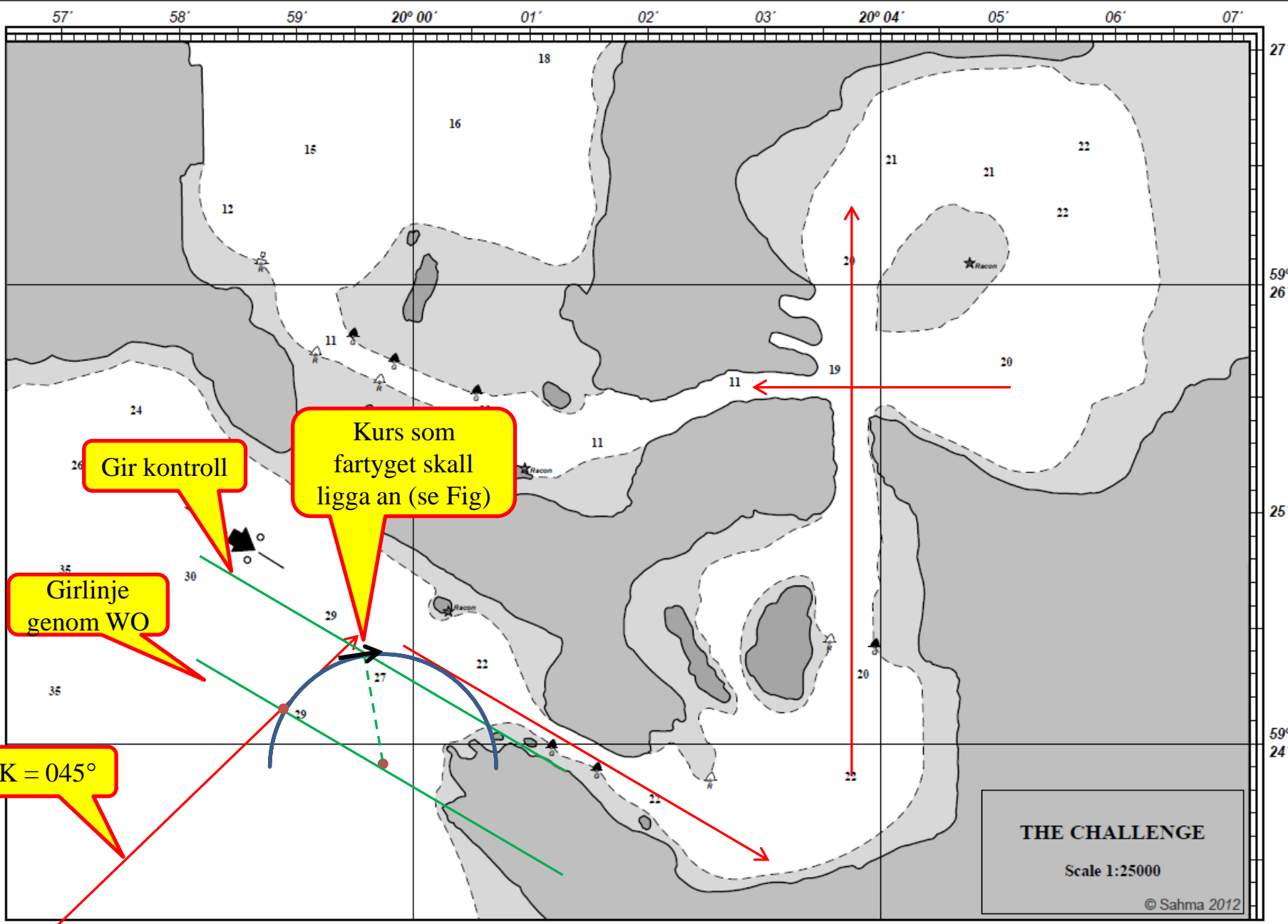


Markera
"WO" i kort

$K = 045^\circ$

Markera
Gircentrum i kort

THE CHALLENGE
Scale 1:25000
© Sahma 2012



Kurs som fartyget skall ligga an (se Fig)

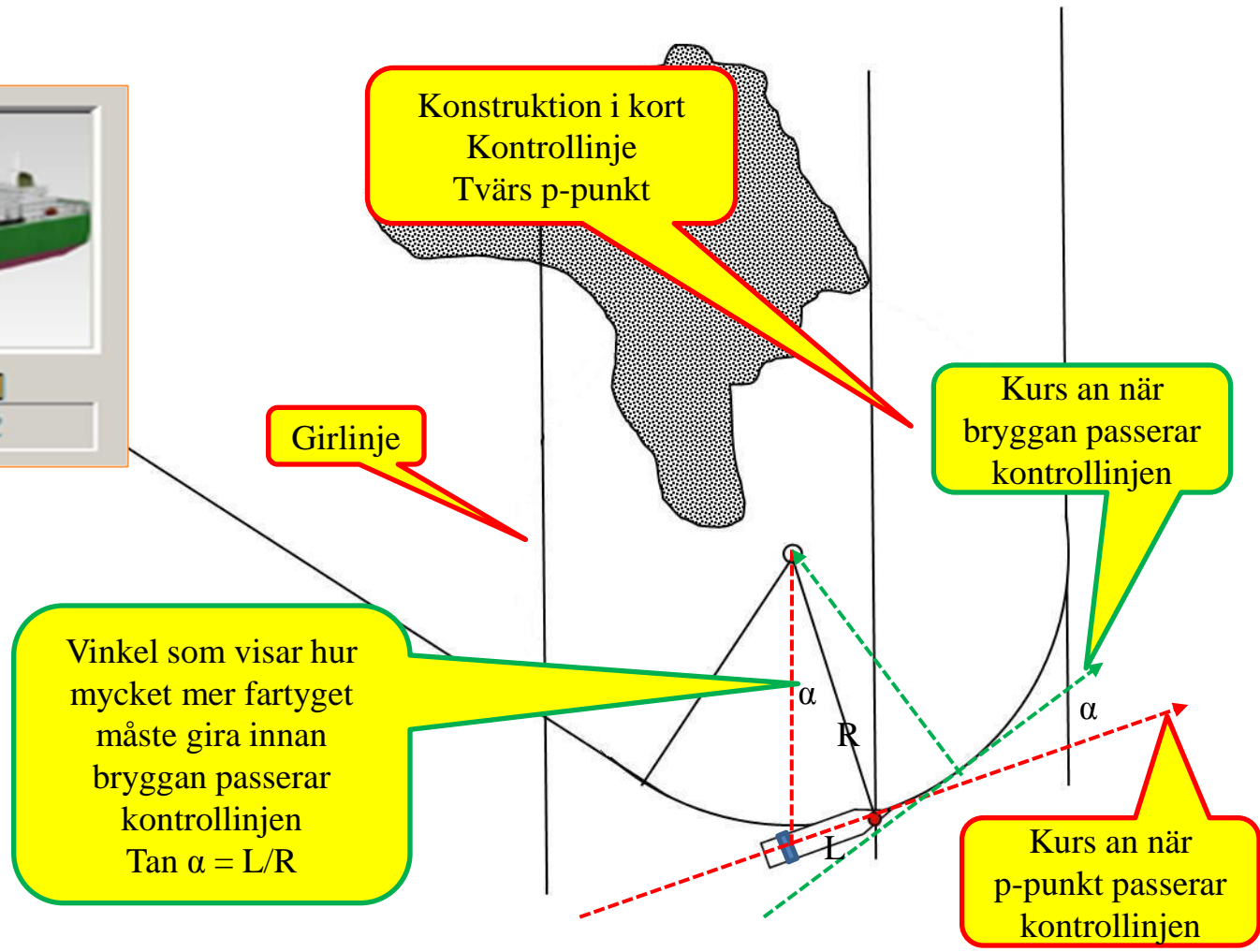
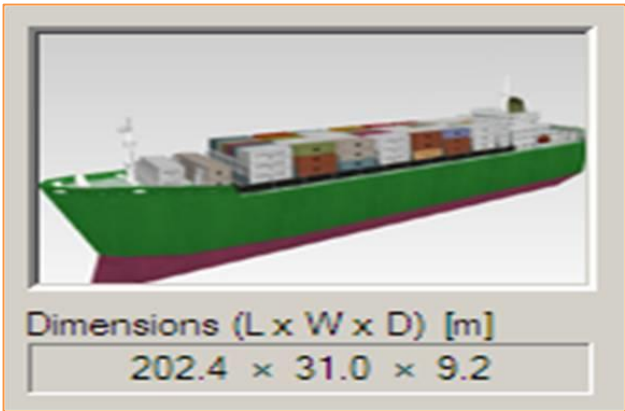
Gir kontroll

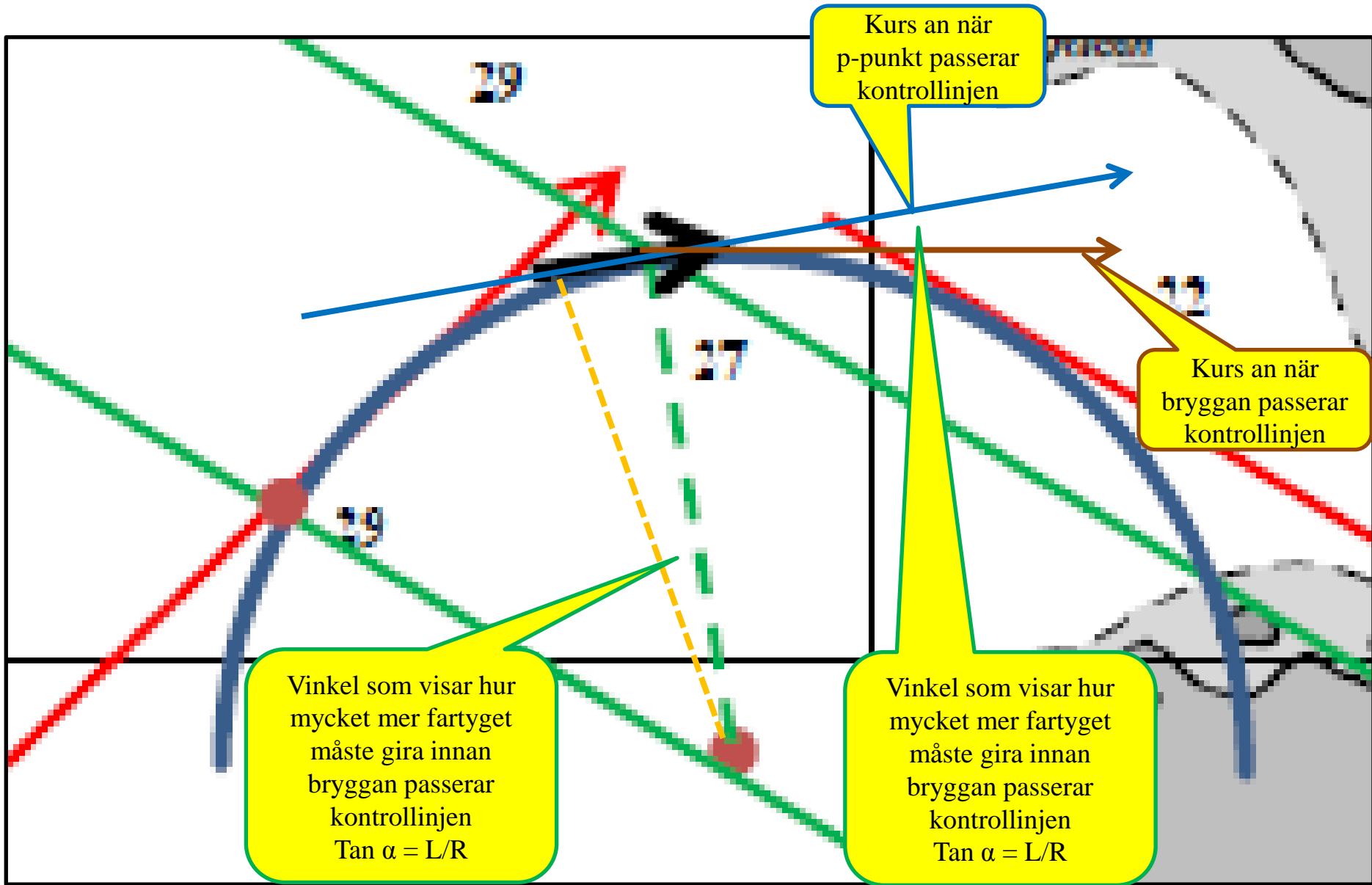
Girlinje genom WO

$K = 045^\circ$

THE CHALLENGE
Scale 1:25000
© Sahma 2012

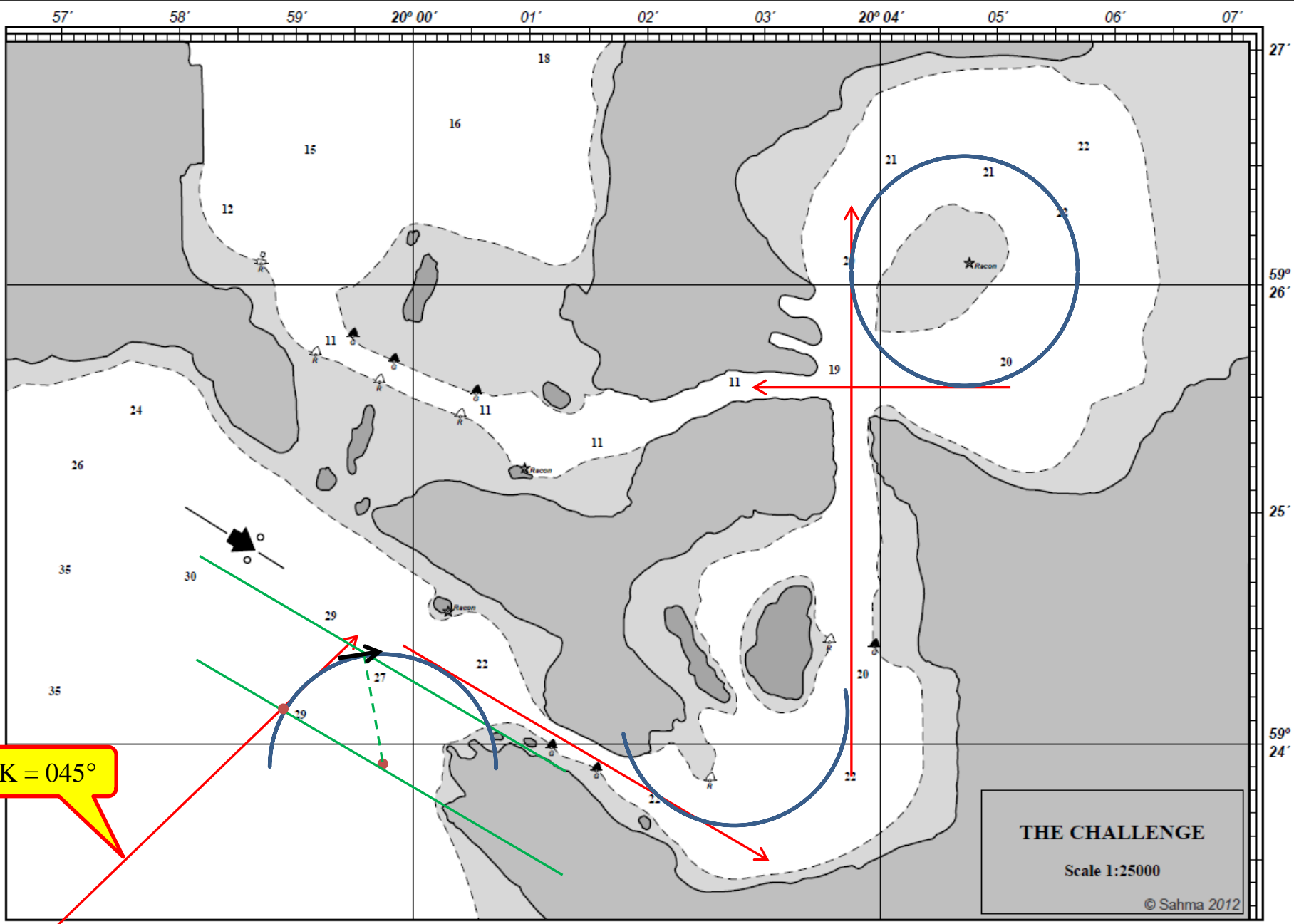
Justering av kurs med avseende på observatörens placering.





Korrigering av kurs

| Avstånd O-P Radie | 0,5 | 1,0 | 1,5 |
|----------------------|-----|-----|-----|
| 1,0 | 3° | 6° | 9° |
| 0,5 | 6° | 11° | 17° |
| 0,4 | 7° | 14° | 21° |
| 0,3 | 9° | 18° | 27° |



K = 045°

THE CHALLENGE
Scale 1:25000
© Sahma 2012